

FED. ROAD DIST. NO.	STATE	PROJ. NO.	FISCAL YEAR	SHEET NO.	TOTAL SHEETS
	OKLA.				

DESCRIPTION	REVISIONS	DATE

NORTHWEST CORNER OF SECTION 3, T-25-N, R-17-E, I.M. FOUND A 1/2" IRON PIN WITH A 1-1/2" BRASS STEM SET BY PERSONS UNKNOWN. SET SIX REFERENCES.

EAST QUARTER CORNER OF SECTION 4, T-25-N, R-17-E, I.M. SET A MAG NAIL W/SHINER STAMPED "CA-1427" AND THREE REFERENCES. THIS POSITION WAS ESTABLISHED USING A COMBINATION OF RECORD PLANS AND LOCAL EVIDENCE. USING TIES TO THE SECTION CORNERS NORTH AND SOUTH OF THE POSITION RECORDED IN PLANS FAS NO. S-57(2) THE NORTHSOUTH POSITION WAS ESTABLISHED. IN THIS PLAN SET IT DEPICTS THE SECTION RUNNING THROUGH THE CENTER OF THE BRIDGE OVER SALT CREEK ROUGHLY 1000 FT. NORTH OF THE 1/4 POSITION. THE EASTWEST POSITION IS ESTABLISHED BY INTERSECTION OF A LINE RUNNING DUE WEST OF THE NORTHSOUTH POSITION AND A LINE RUNNING SOUTH FROM THE SECTION CORNER NORTH AND THE MIDPOINT OF THE BRIDGE.

SOUTHWEST CORNER OF SECTION 3, T-25-N, R-17-E, I.M. FOUND A 60d NAIL SET BY PERSONS UNKNOWN. SET SIX REFERENCES.

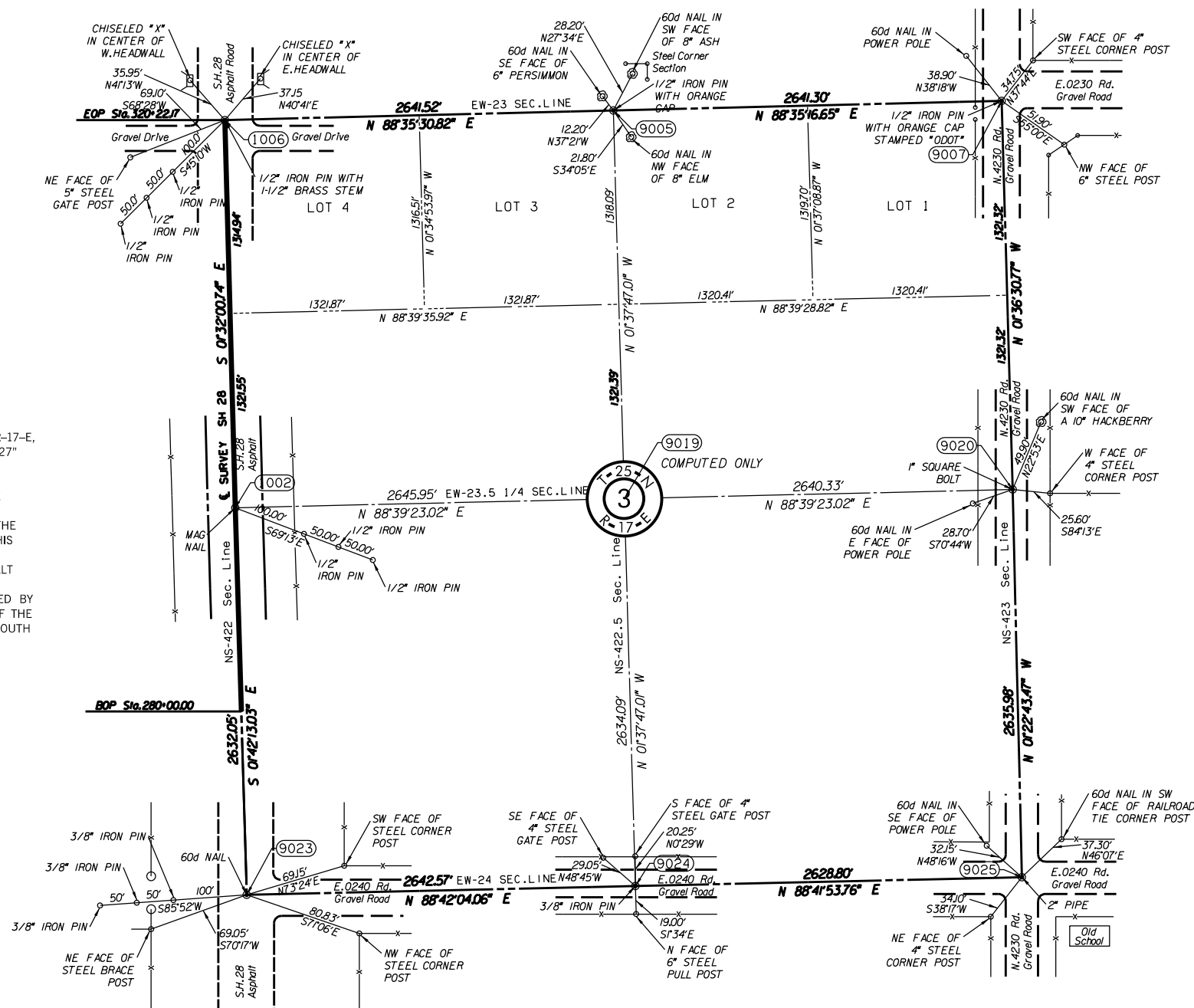
NORTH QUARTER CORNER OF SECTION 3, T-25-N, R-17-E, I.M. FOUND 1/2" IRON PIN W/ CAP STAMPED "ODOT". SET THREE REFERENCES.

NORTHEAST CORNER OF SECTION 3, T-25-N, R-17-E, I.M. FOUND A 1/2" IRON PIN WITH ORANGE CAP STAMPED "ODOT". SET THREE REFERENCES.

EAST QUARTER CORNER OF SECTION 3, T-25-N, R-17-E, I.M. FOUND AND ACCEPTED A 1" SQUARE BOLT SET BY PERSONS UNKNOWN. SET THREE REFERENCES.

SOUTHWEST CORNER OF SECTION 3, T-25-N, R-17-E, I.M. FOUND A 2" PIPE SET BY PERSONS UNKNOWN. SET THREE REFERENCES.

SOUTH QUARTER CORNER OF SECTION 3, T-25-N, R-17-E, I.M. FOUND 3/8" IRON PIN SET BY PERSONS UNKNOWN. SET THREE REFERENCES.



SCALE: 1" = 500'

NOTE: REFERENCES SHOWN ARE NOT TO SCALE

PLS	DMM	OKLAHOMA DEPARTMENT OF TRANSPORTATION SURVEY DIVISION
DRAWN	VKM	
CHECKED	CAC	
APPROVED	DMM	
CREW	GES, INC.	
		SURVEY DATA SHEET
		SWO 4851(1) PROJECT NO. 28857(04) SHEET NO. S010